



An Industry Leader For
Over 60 Years

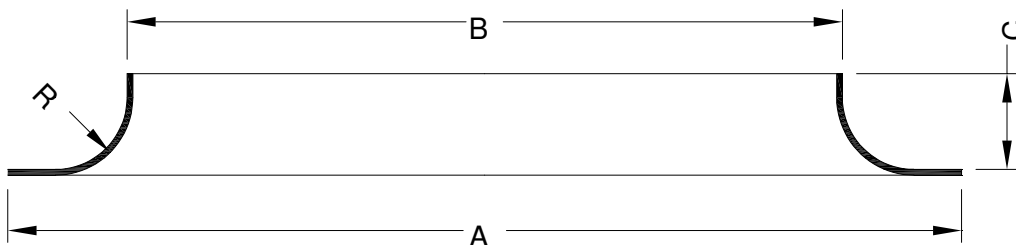


Factory 30, 70-72 Cave Hill Road,
Industrial Gardens Estate,
Lilydale, Vic. 3140, Australia.
Ph. 03 9739 5955 Fax. 03 9739 5808.
Web: www.whitehorseindustries.com.au
Email: spinners@whitehorseindustries.com.au

Contact Details.		
Company Name	Contact Name	
Phone Number	Fax Number	
Email Address		
Address	State	Post Code

Spinning Dimensions.		To ensure accurate quoting, please complete all sections			
Material Type		Material Gauge			
Dimension A (mm)	Tolerance	+	-	I/D <input type="checkbox"/>	O/D <input type="checkbox"/>
Dimension B (mm)	Tolerance	+	-	I/D <input type="checkbox"/>	O/D <input type="checkbox"/>
Dimension C (mm)	Tolerance	+	-		
Dimension R (mm)					

Inlet Flange.



Additional Information. Quantities Required.